

**PROJECT:** Residential & Commercial Compound

**YEAR:** 2010

**LOCATION:** Saudi Arabia



Tools: Autodesk 3ds Max, V-Ray, Adobe Photoshop



Tools: Autodesk 3ds Max, V-Ray, Adobe Photoshop



Tools: Autodesk 3ds Max, V-Ray, Adobe Photoshop



Tools: Autodesk 3ds Max, V-Ray, Adobe Photoshop

**PROJECT:** Administrative Building

**YEAR:** 2010

**LOCATION:** Saudi Arabia



Tools: Autodesk 3ds Max, V-Ray, Adobe Photoshop



Tools: Autodesk 3ds Max, V-Ray, Adobe Photoshop

**PROJECT:** Mixed-Use Building

**YEAR:** 2010

**LOCATION:** Saudi Arabia



Tools: Autodesk 3ds Max, V-Ray, Adobe Photoshop



Tools: Autodesk 3ds Max, V-Ray, Adobe Photoshop



**PROJECT:** Residential Compound

**YEAR:** 2012

**LOCATION:** Saudi Arabia



Tools: Autodesk 3ds Max, V-Ray, Adobe Photoshop



Tools: Autodesk 3ds Max, V-Ray, Adobe Photoshop



Tools: Autodesk 3ds Max, V-Ray, Adobe Photoshop



Tools: Autodesk 3ds Max, V-Ray, Adobe Photoshop



Tools: Autodesk 3ds Max, V-Ray, Adobe Photoshop



Tools: Autodesk 3ds Max, V-Ray, Adobe Photoshop

**PROJECT:** International School    **YEAR:** 2016    **LOCATION:** Saudi Arabia



Tools: Autodesk 3ds Max, V-Ray, Adobe Photoshop



Tools: Autodesk 3ds Max, V-Ray, Adobe Photoshop





Tools: Autodesk 3ds Max, V-Ray, Adobe Photoshop



Tools: Autodesk 3ds Max, V-Ray, Adobe Photoshop

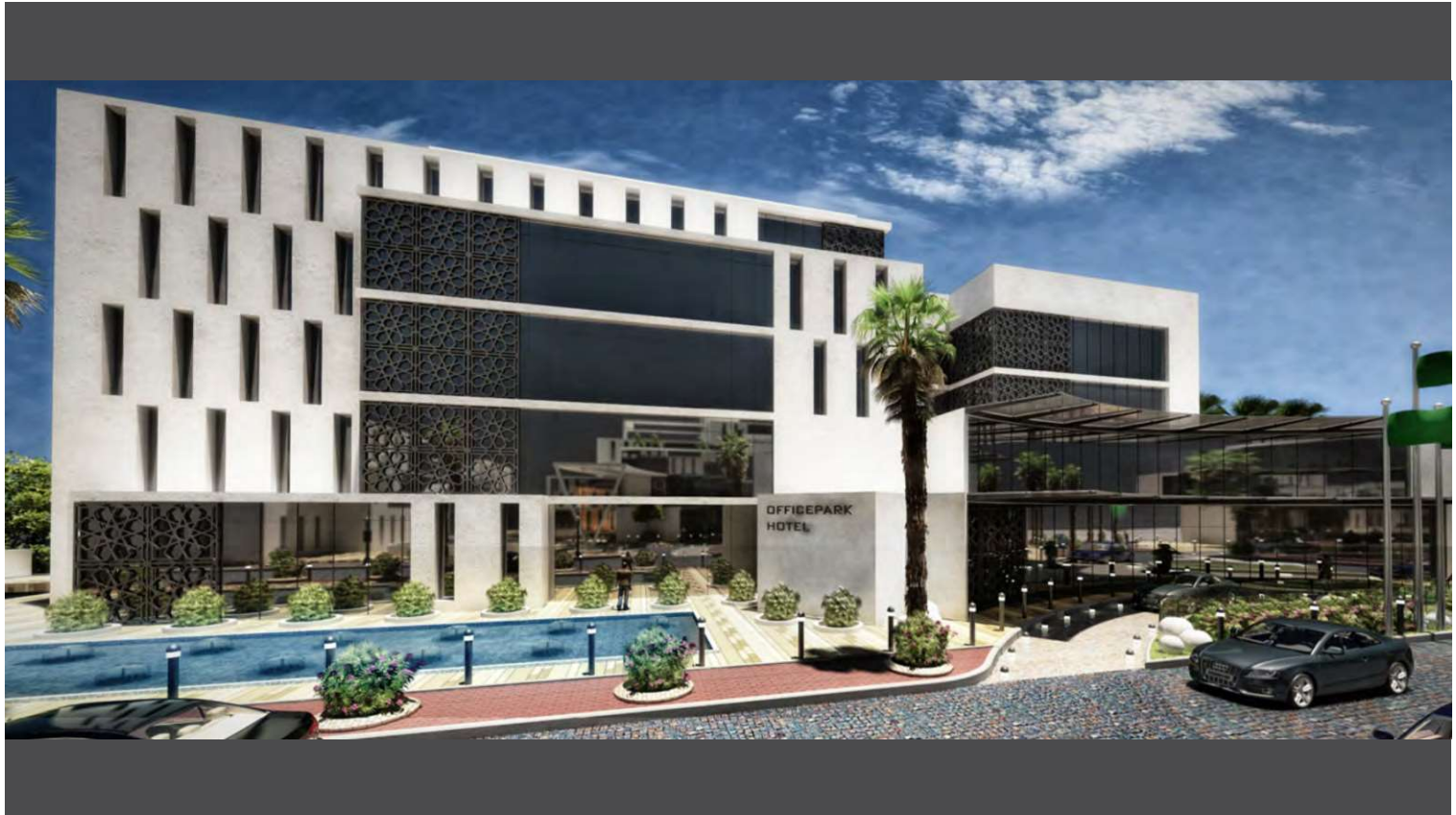


Tools: Autodesk 3ds Max, V-Ray, Adobe Photoshop



Tools: Autodesk 3ds Max, V-Ray, Adobe Photoshop

**PROJECT:** Business Village    **YEAR:** 2015    **LOCATION:** Saudi Arabia



Tools: Autodesk 3ds Max, V-Ray, Adobe Photoshop



Tools: Autodesk 3ds Max, V-Ray, Adobe Photoshop



Tools: Autodesk 3ds Max, V-Ray, Adobe Photoshop



Tools: Autodesk 3ds Max, V-Ray, Adobe Photoshop





Tools: Autodesk 3ds Max, V-Ray, Adobe Photoshop



Tools: Autodesk 3ds Max, V-Ray, Adobe Photoshop



Tools: Autodesk 3ds Max, V-Ray, Adobe Photoshop



Tools: Autodesk 3ds Max, V-Ray, Adobe Photoshop



Tools: Autodesk 3ds Max, V-Ray, Adobe Photoshop



Tools: Autodesk 3ds Max, V-Ray, Adobe Photoshop



Tools: Autodesk 3ds Max, V-Ray, Adobe Photoshop



Tools: Autodesk 3ds Max, V-Ray, Adobe Photoshop

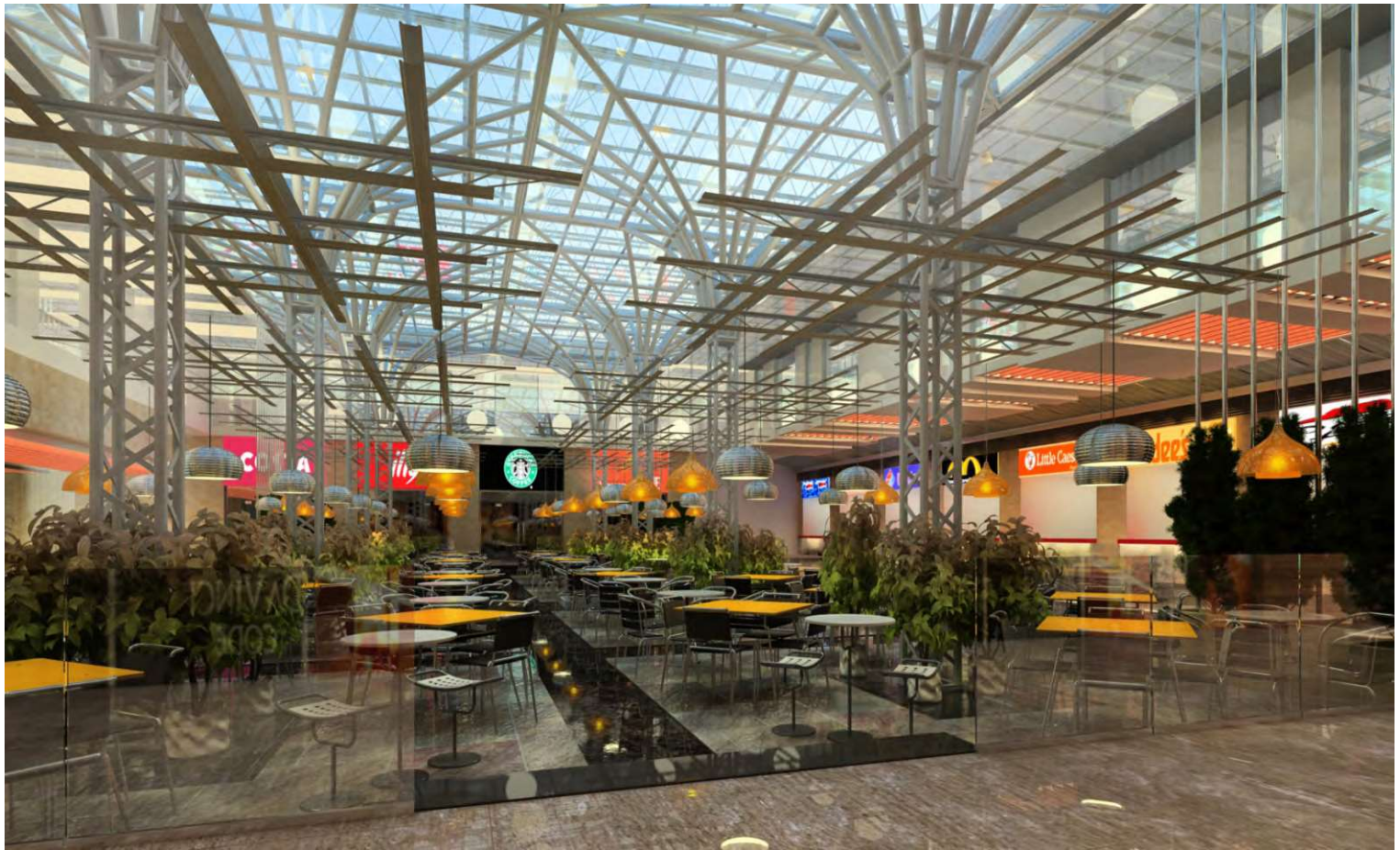




Tools: Autodesk 3ds Max, V-Ray, Adobe Photoshop



Tools: Autodesk 3ds Max, V-Ray, Adobe Photoshop



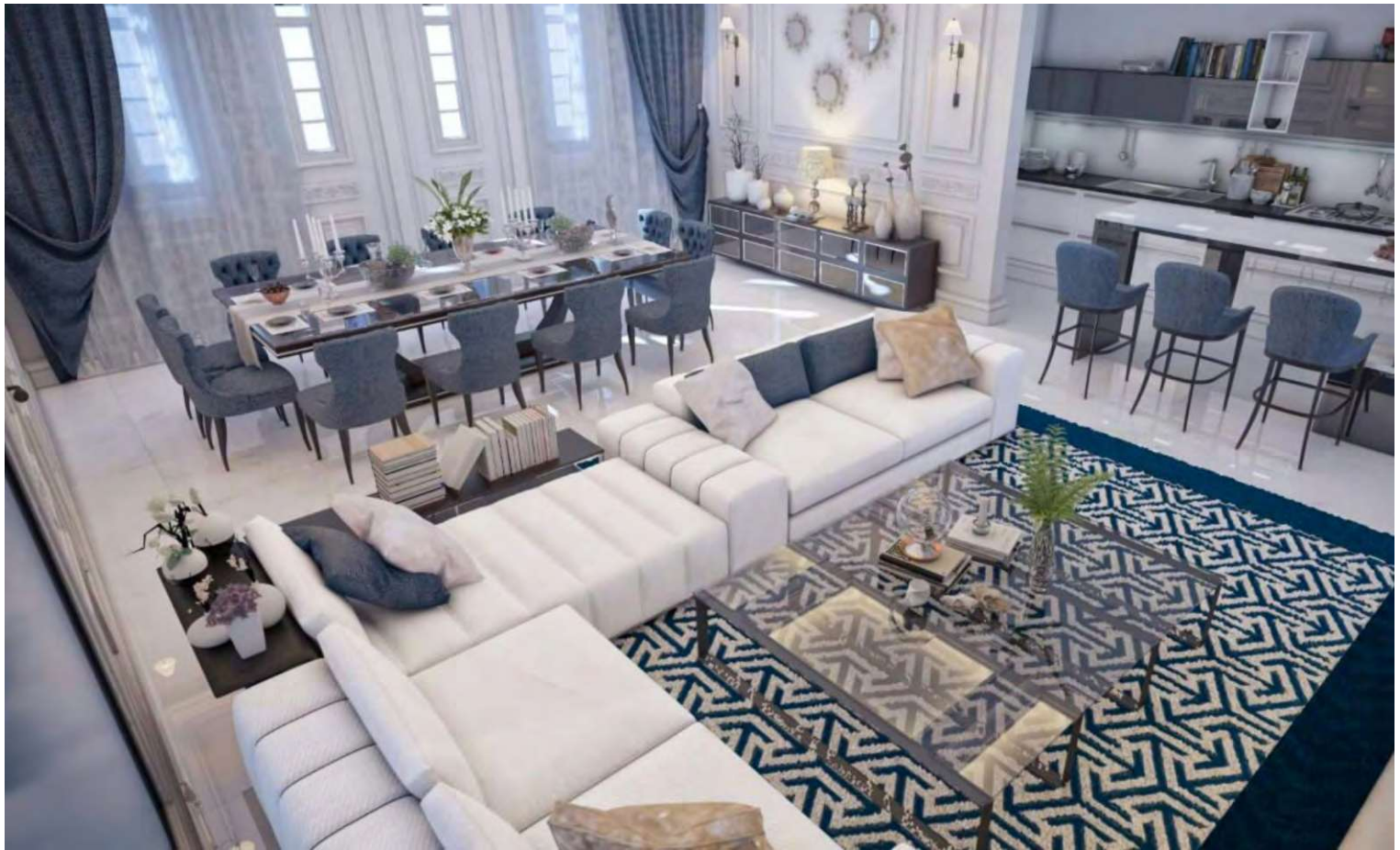
Tools: Autodesk 3ds Max, V-Ray, Adobe Photoshop



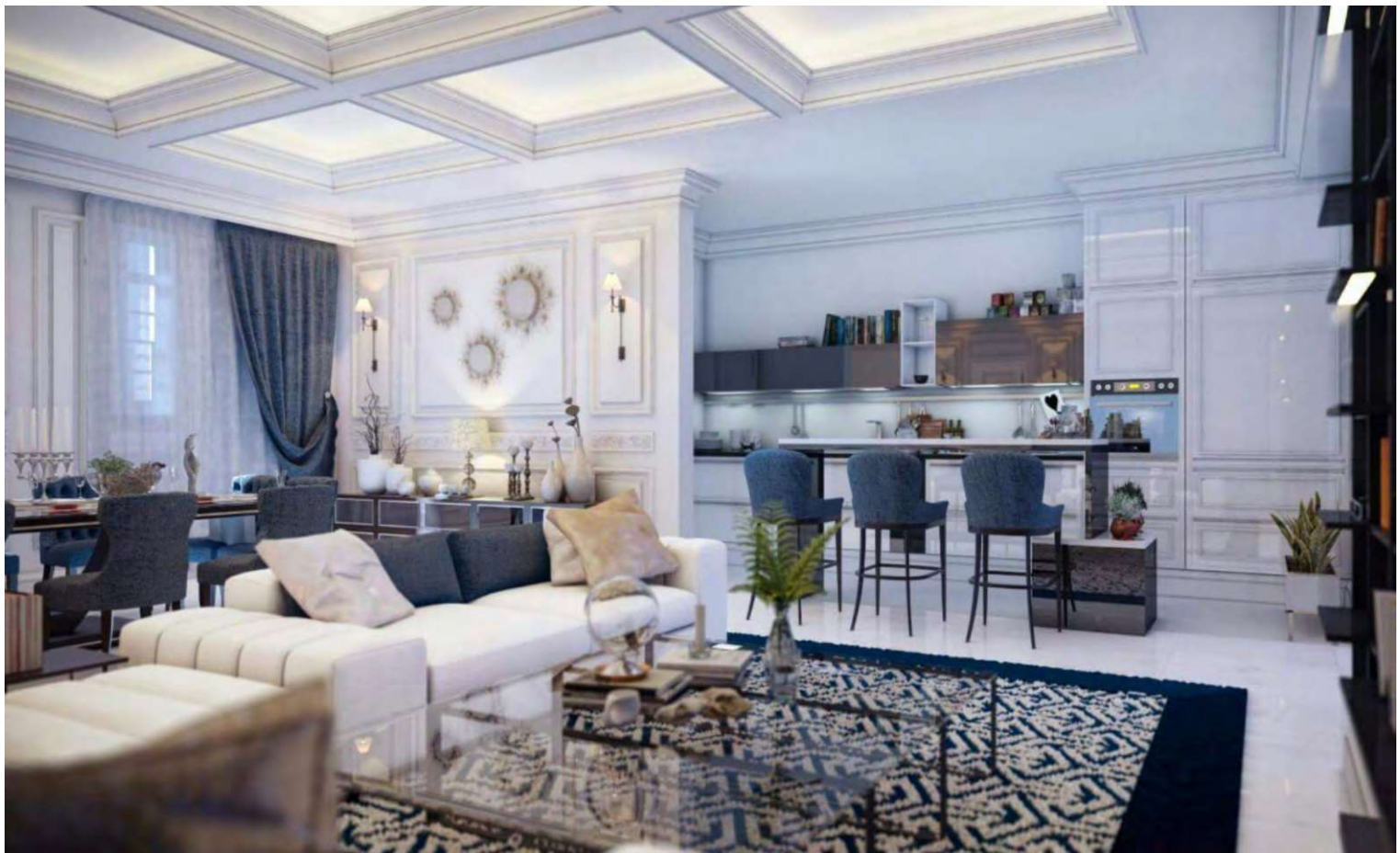
Tools: Autodesk 3ds Max, V-Ray, Adobe Photoshop



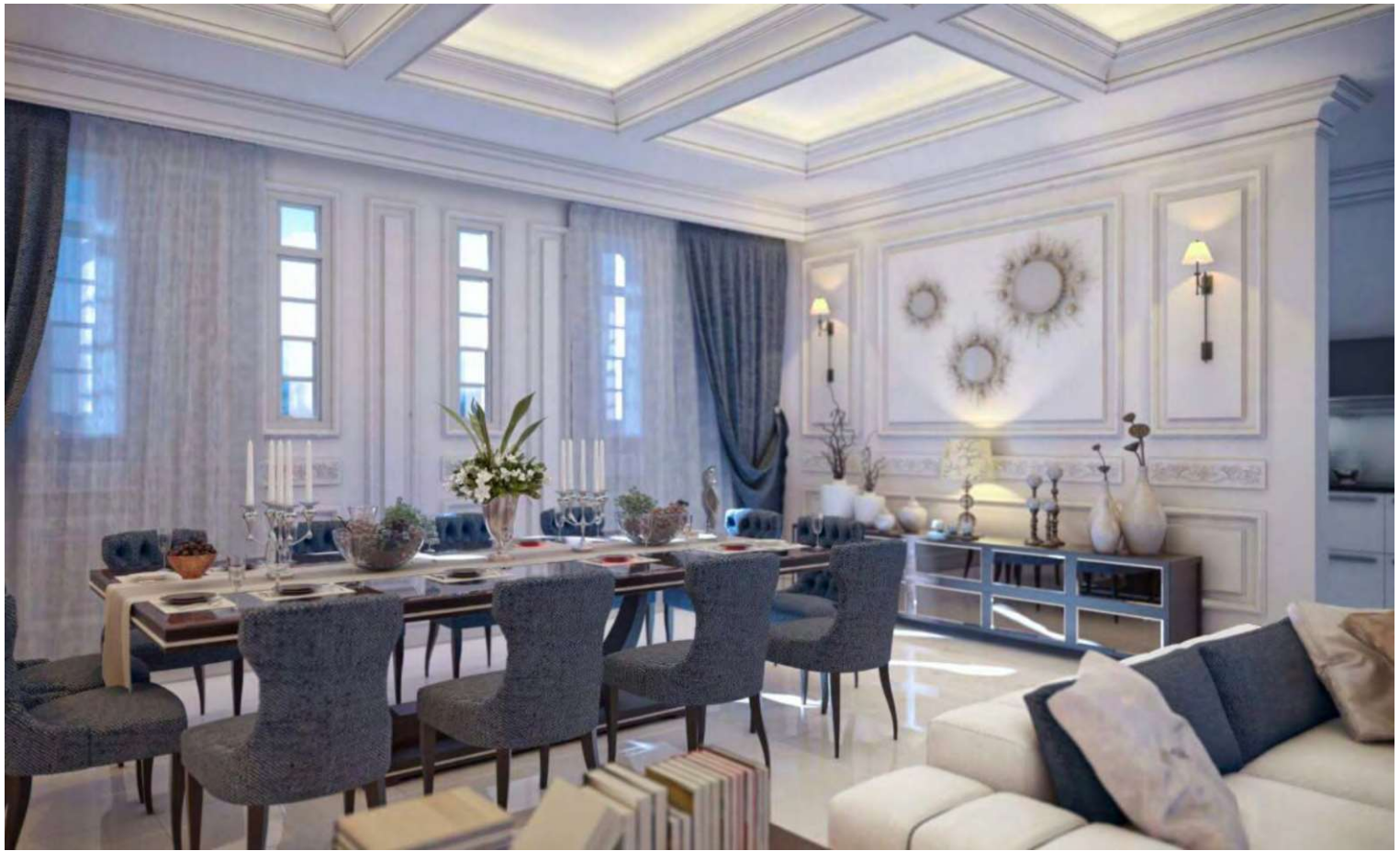
Tools: Autodesk 3ds Max, Corona Renderer, Adobe Photoshop



Tools: Autodesk 3ds Max, Corona Renderer, Adobe Photoshop



Tools: Autodesk 3ds Max, Corona Renderer, Adobe Photoshop



Tools: Autodesk 3ds Max, Corona Renderer, Adobe Photoshop



**PROJECT:** Residential Interior Design    **YEAR:** 2017    **LOCATION:** Saudi Arabia



Tools: SketchUp, V-Ray, Adobe Photoshop

PROJECT: Residential Interior Design

YEAR: 2017

LOCATION: Saudi Arabia



Tools: SketchUp, V-Ray, Adobe Photoshop



Tools: SketchUp, V-Ray, Adobe Photoshop



Tools: SketchUp, V-Ray, Adobe Photoshop



Tools: Autodesk 3ds Max, V-Ray, Adobe Photoshop



Tools: Autodesk 3ds Max, V-Ray, Adobe Photoshop



Tools: Autodesk 3ds Max, Corona Renderer, Adobe Photoshop

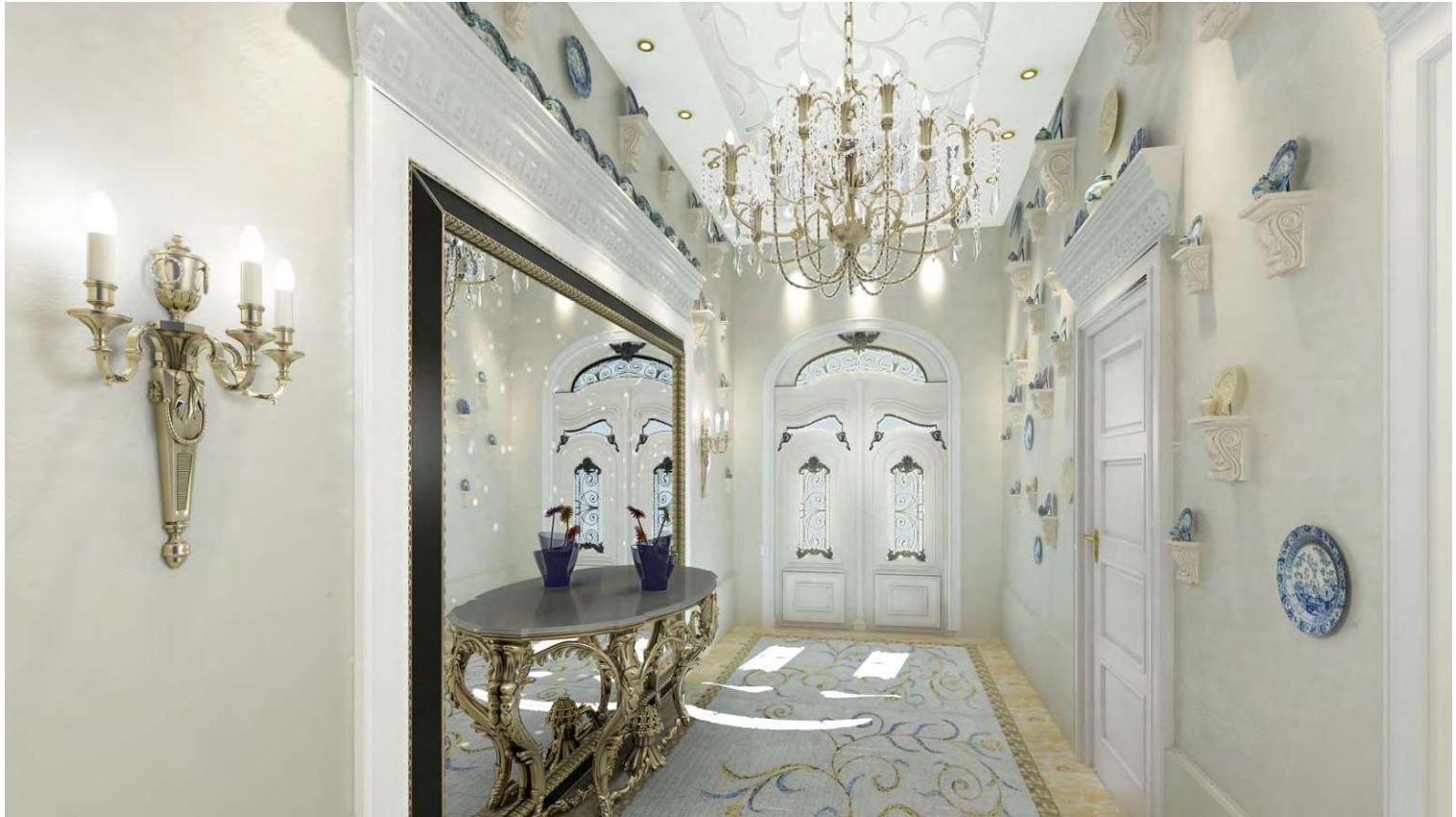


Tools: Autodesk 3ds Max, V-Ray, Adobe Photoshop





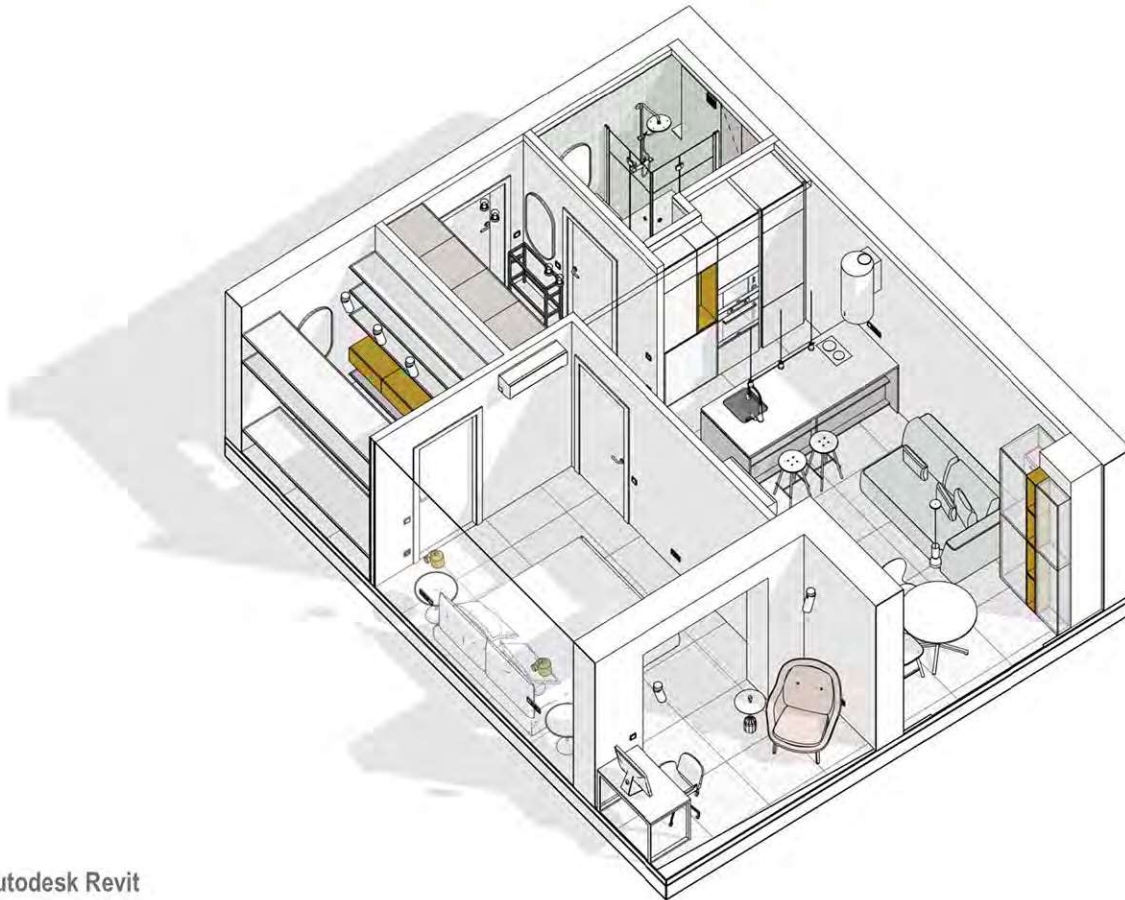
Tools: Autodesk 3ds Max, V-Ray, Adobe Photoshop



Tools: Autodesk 3ds Max, V-Ray, Adobe Photoshop



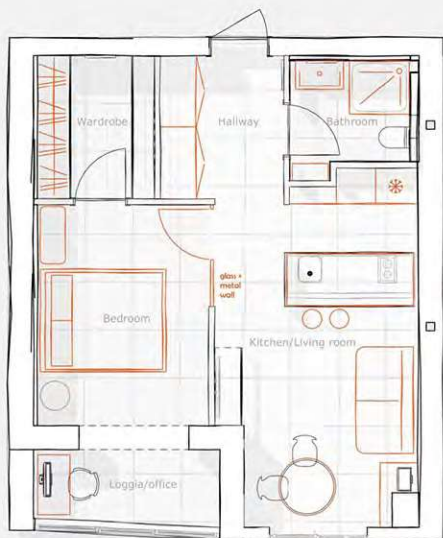
Tools: Autodesk 3ds Max, V-Ray, Adobe Photoshop



Tool: Autodesk Revit

# Concept

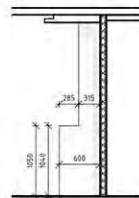
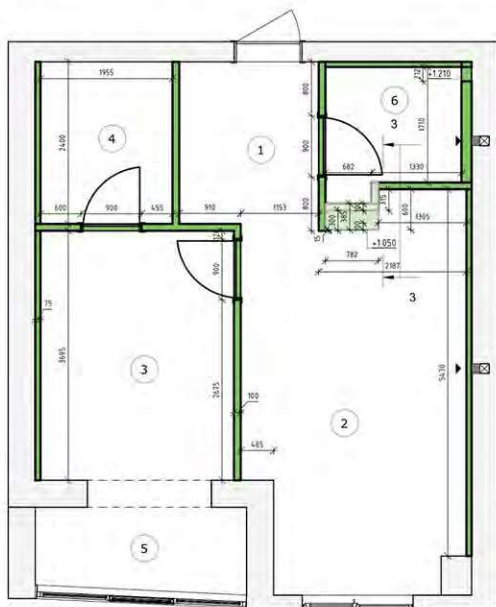
1 : 50



Tool: Autodesk Revit

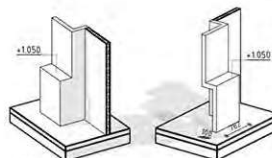
# Montage Plan

1 : 50



## Section 3

1 : 50



kitchen side



bathroom side

## Legend

1 : 50

Fliese Glas 100 mm

Fliese Dark 100 mm

Montage (Plasterboard) direkt an Metall-Frame / Carbon

Plasterboard 12,5 Knauf  
Metall-Framework  
Armstrong CW50  
Ziegel mit  
Porenkiesel, Stein 40x200 mm

Plasterboard 12,5 Knauf  
Plasterboard 12,5 Knauf  
Metall-Framework  
Armstrong CW50  
Plasterboard 12,5 Knauf  
Plasterboard 12,5 Knauf



### Room explanation

N°	Name	Area
1	Hallway	5,9 m <sup>2</sup>
2	Kitchen/living room	17,9 m <sup>2</sup>
3	Bedroom	10,6 m <sup>2</sup>
4	Wardrobe	4,7 m <sup>2</sup>
5	Loggia/office	3,8 m <sup>2</sup>
6	Bathroom	3,8 m <sup>2</sup>
Total:		45,7 m <sup>2</sup>

### Wall material list

Material Name	Material Area
Plasterboard	173,8 m <sup>2</sup>

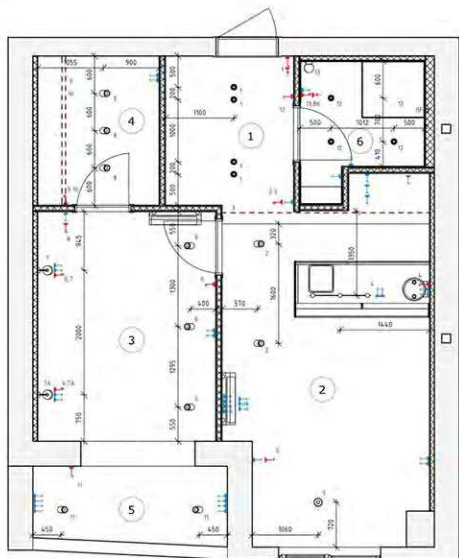
### Notes:

1. General information see sheets 04, 05, 06;
2. For the relative mark ±0.000, accepting the mark of the finished floor;
3. The dimensions of existing structures/constructions should be specified locally.

Tool: Autodesk Revit

# Lighting Plan

1 : 50



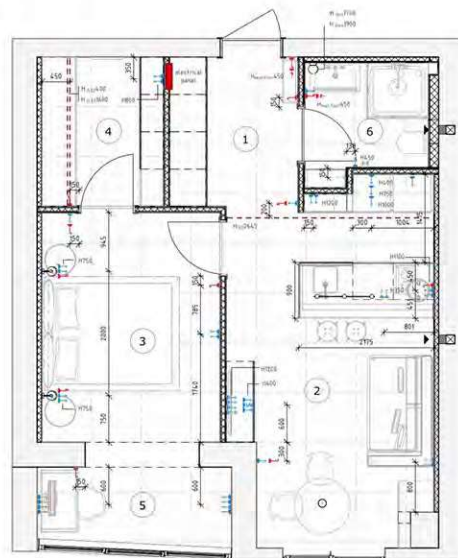
Lighting specification		
Type	Sum	Pic
wall lighting ball	2	
surface mounted ceiling lighting	10	
pendant	1	
linear pendant	1	
flush round trim, IP44	4	
flush round trim	4	
bedroom wall lighting	2	

Legend	
	Recessed lighting
	Surface-mounted ceiling light
	Track light
	Wall-mounted sconce
	Pendant linear light
	LED strip, 2700-3000K
	Bedroom fan

# Electrical Plan

1 : 50

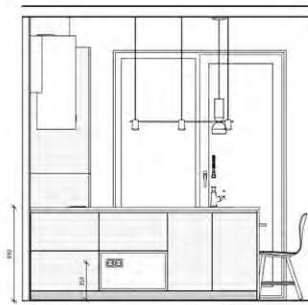


Tool: Autodesk Revit



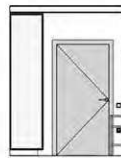
kitchen side 1

1 : 25



kitchen side 2

1 : 25



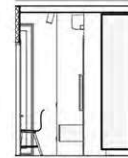
h. side 1

1 : 50



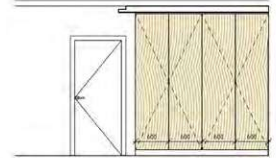
h. side 2

1 : 50



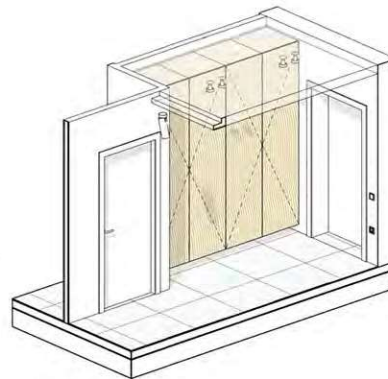
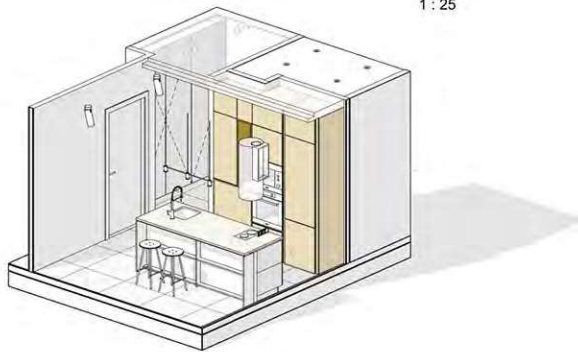
h. side 3

1 : 50

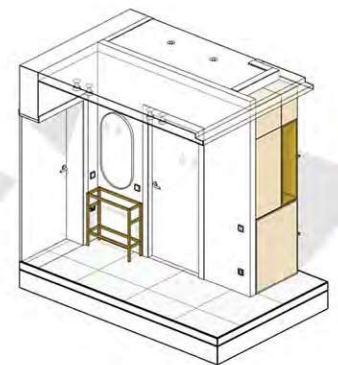


h. side 4

1 : 50

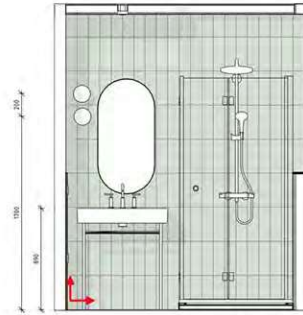
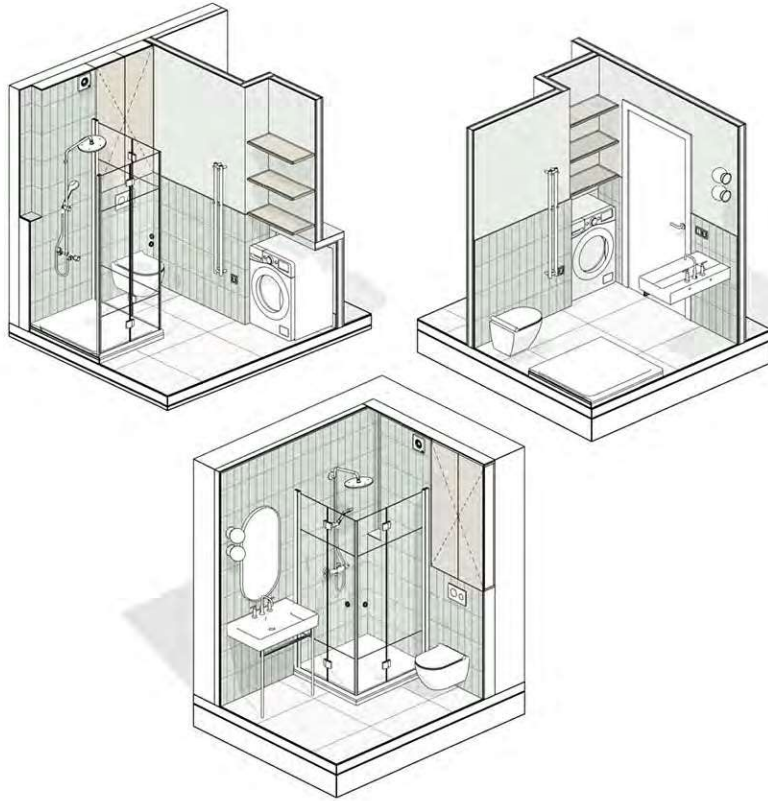


Hallway

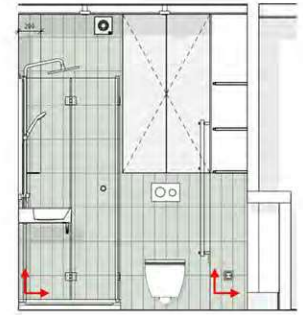


Tool: Autodesk Revit

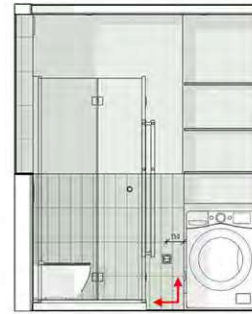




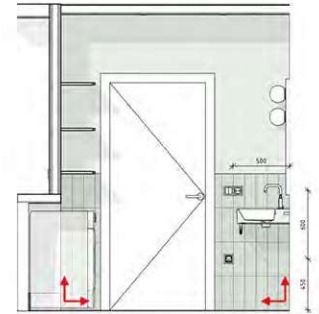
bath. side 1  
1 : 25



bath. side 2  
1 : 25



bath. side 3  
1 : 25



bath. side 4  
1 : 25

Tool: Autodesk Revit